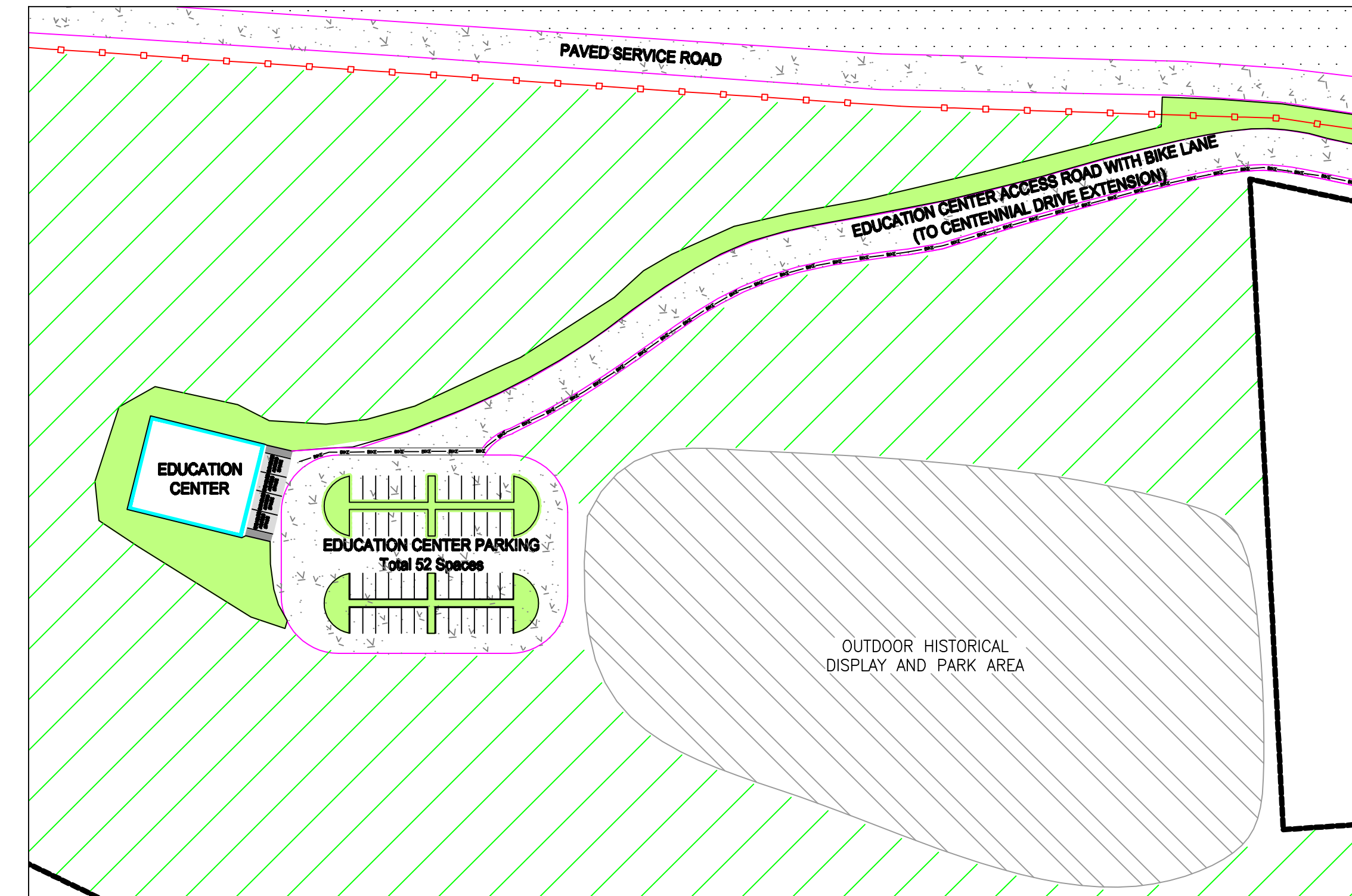
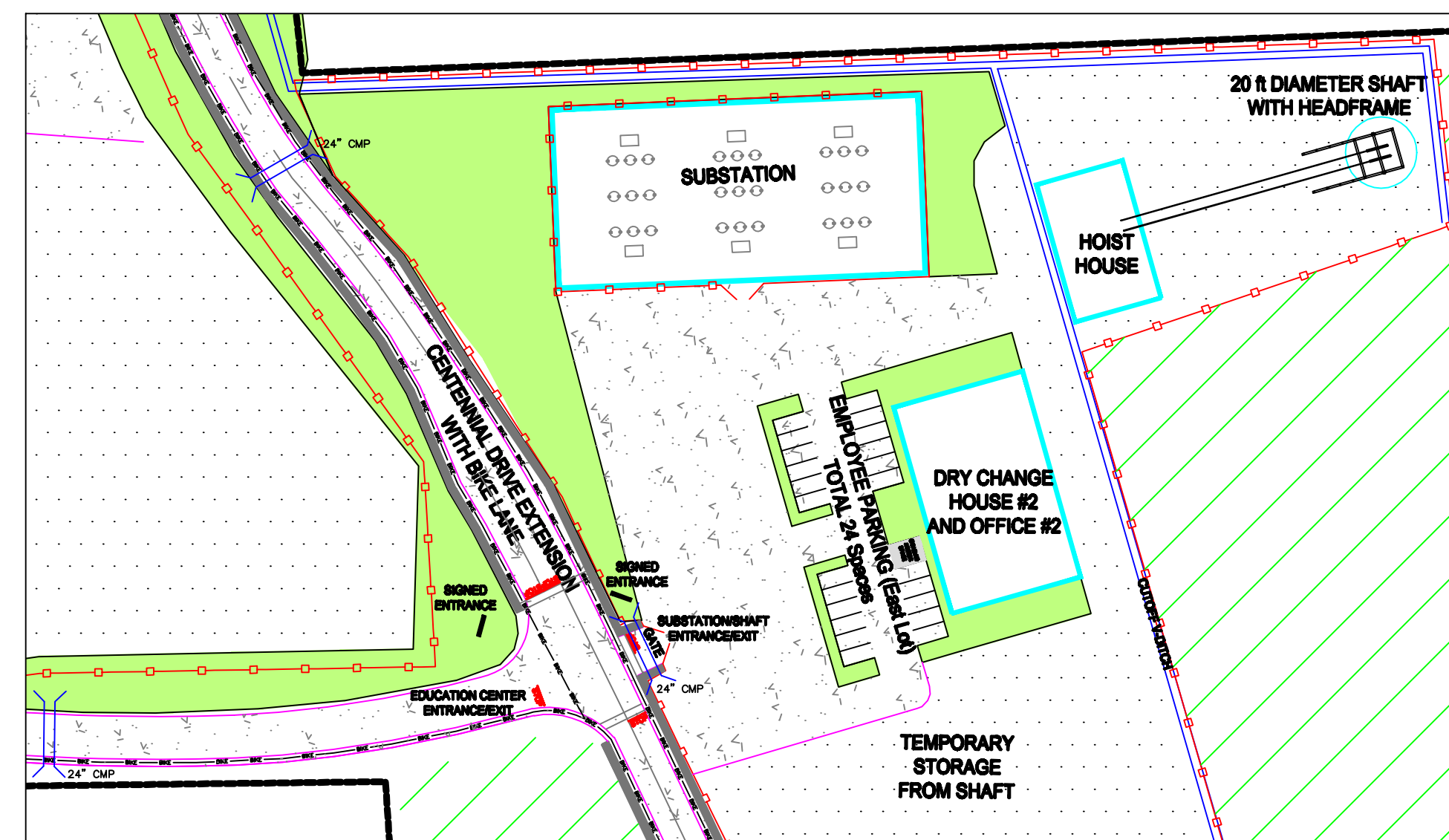




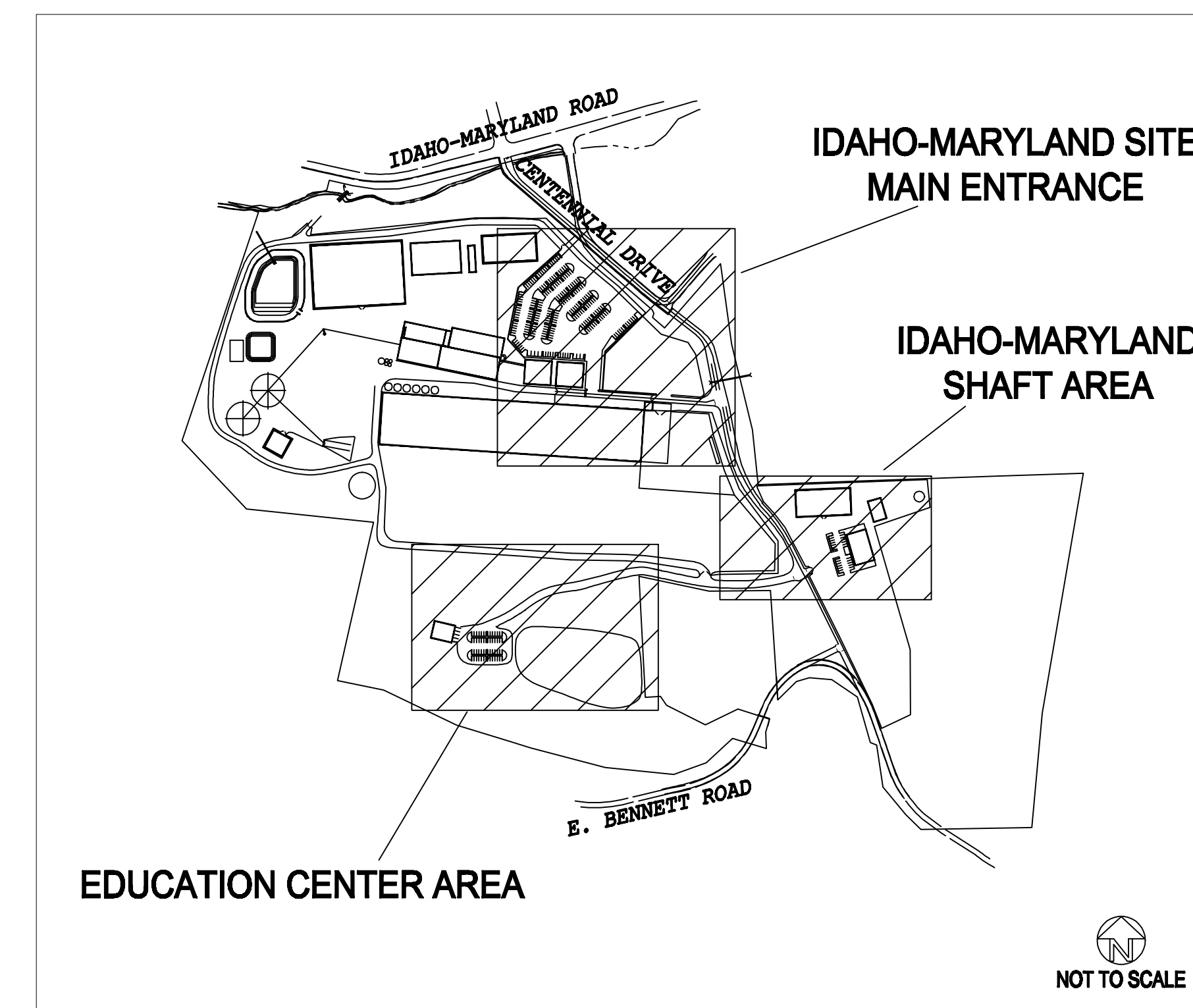
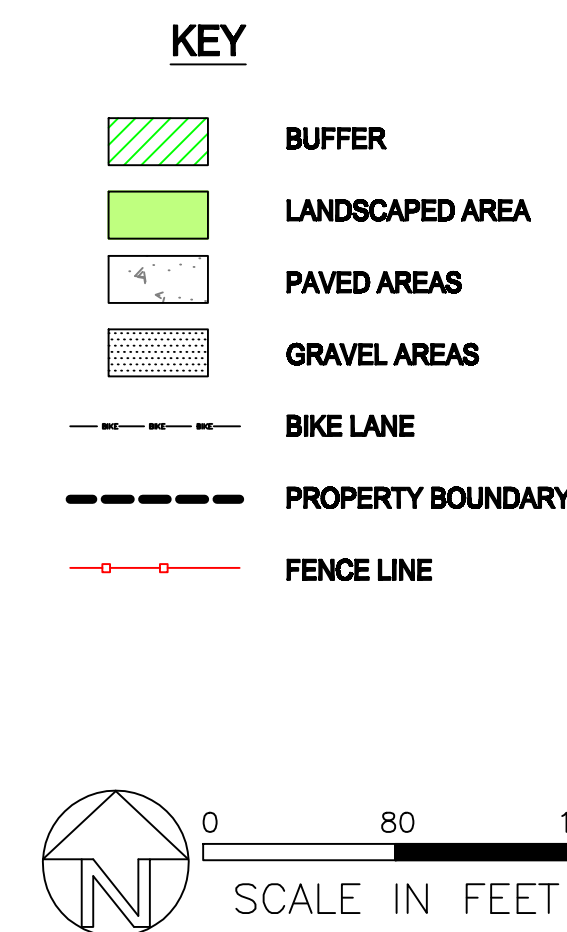
**IDAHO-MARYLAND SITE
MAIN ENTRANCE**



EDUCATION CENTER AREA



IDAHO-MARYLAND SHAFT AREA



LOCATION KEY

NO.	DATE	REVISIONS	BY	CHK
A	04-07	Issued For Permitting		

DRAWN: DPH	PROJECT:
DATE: 3-14-07	SCALE: AS SHOWN
CHECKED: PN	APPROVED: DGW
DATE: 4-9-07	DATE: 4-9-07

NOTICE
This document and the information shown thereon is confidential, and has been prepared for the exclusive use of Idaho-Maryland Mining Corporation (IMMC) and is intended solely for the use of IMMC. Any use of, or reliance on, this document or its contents by any party is at each party's sole and complete risk. By use of this document, recipients agree that IMMC shall not be held responsible or liable for any damages or claims (whenever or howsoever caused) arising from use of, or reliance on, this document. This drawing and/or the information contained herein shall not be copied, in whole or in part, without the prior written consent of IMMC. Copies of this document, in whole or in part and made for any use, shall include the note on each copy and on each subsequent copy.



**Idaho-Maryland Mine Project
Grass Valley, California**

**Idaho-Maryland Mine Site
Detail Of Parking And Landscape Areas**

PLATE:
R7E