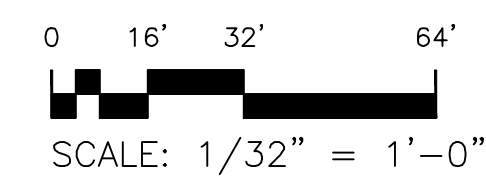
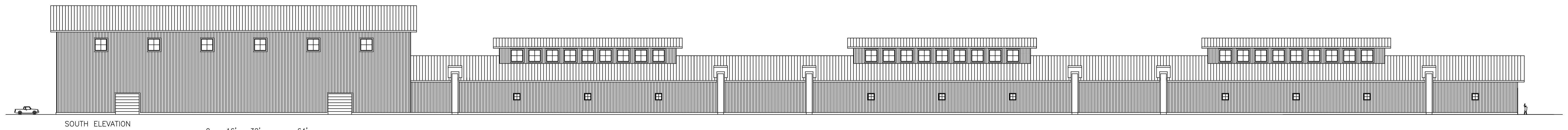
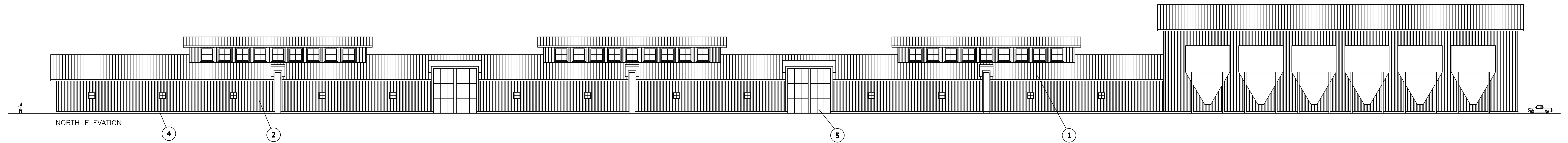
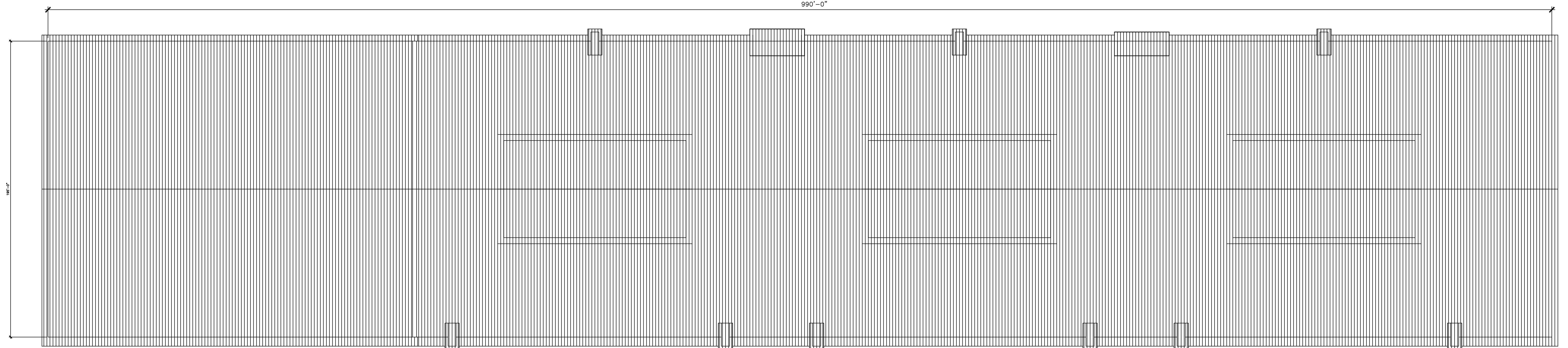


**MATERIALS LEGEND**

- ① Metal Roof - Color: Hemlock Green
- ② Metal Siding - Color: Light Stone
- ③ Metal Door - Color: Slate Gray
- ④ Concrete Base - Color: Natural
- ⑤ Translucent Glazing



990'-0"



NO.	DATE	REVISIONS	BY	CHK
A	04-07	Issued For Permitting		

DRAWN:	JS/JW	PROJECT:	
DATE:	3-14-07	SCALE:	AS SHOWN
CHECKED:	PN	APPROVED:	DGW
DATE:	4-9-07	DATE:	4-9-07

NOTICE: This document and the information shown thereon is confidential, and has been prepared for the exclusive use of Idaho-Maryland Mining Corporation (IMMC) and it is intended solely for the use of IMMC. Any use of, and/or reliance on, this document or its contents by any party is at such party's sole and complete risk. By use of this document, recipients agree that IMMC shall not be held responsible or liable for any damages or claims (whethersoever or howsoever caused) arising from use of, or reliance on, this document. The drawing and/or the information contained herein shall not be copied, in whole or in part, without the prior written consent of IMMC. Copies of this document, in whole or in part and made for any use, shall include this note on each copy and on each subsequent copy.



**Idaho-Maryland Mine Project**  
Grass Valley, California

Prepared by:  
**hga**  
Architecture | Engineering | Planning

**BUILDING 7**  
**CERAMICS PLANT**

PLATE:  
**R12G**

R12G-Building7-CeramicsBldg