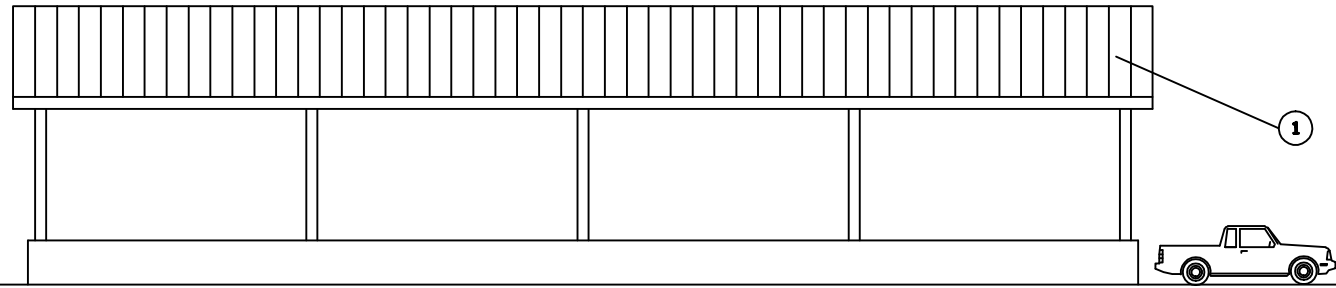
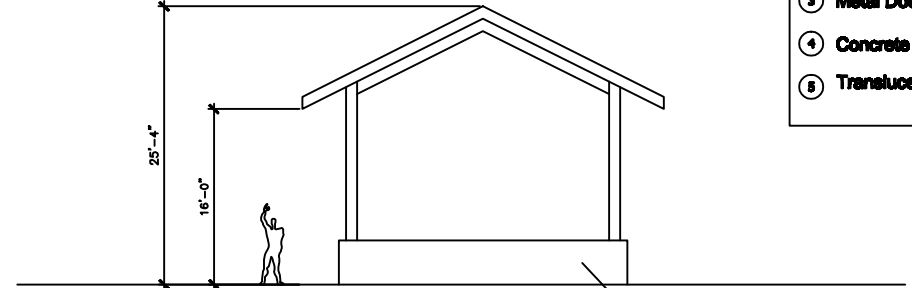


MATERIALS LEGEND

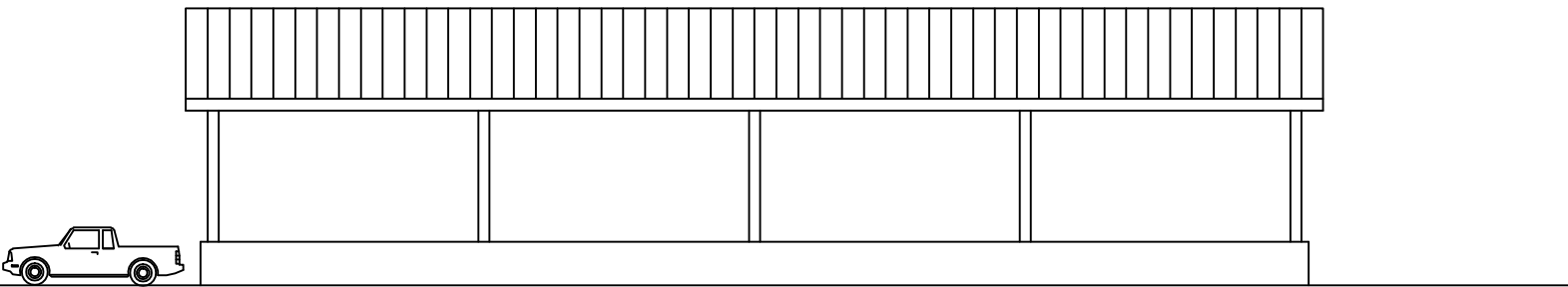
- ① Metal Roof - Color: Blue Gray
- ② Metal Siding - Color: Sage
- ③ Metal Door - Color: Dark Bronze
- ④ Concrete Base - Color: Natural
- ⑤ Translucent Glazing



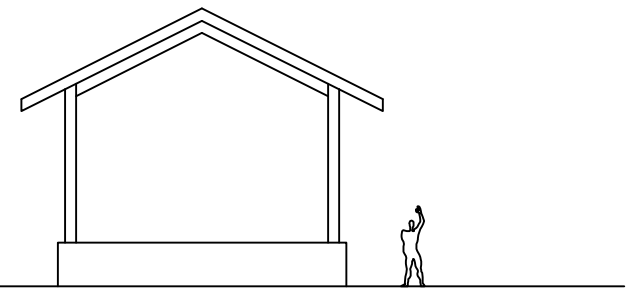
WEST ELEVATION



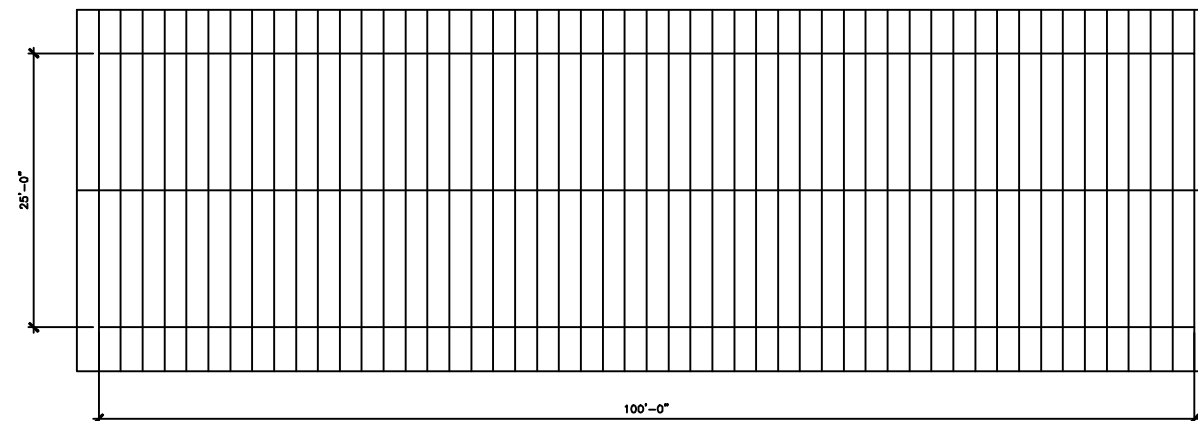
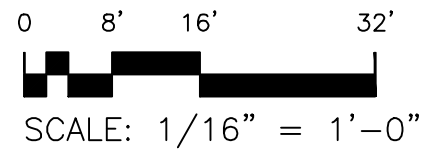
NORTH ELEVATION



EAST ELEVATION



SOUTH ELEVATION



NO.	DATE	REVISIONS	BY	CHK	DRAWN: JS/JW	PROJECT: Idaho-Maryland Mine Project	SCALE: AS SHOWN	NOTE: This document and the information shown therein is confidential, and has been prepared for the exclusive use of Idaho-Maryland Mining Corporation. It is intended solely for the use of IMAC. Any use of, or other reliance on, this document or its contents by any party is at that party's sole and complete risk. By use of this document, recipient agrees that IMAC shall not be held responsible or liable for any damages or losses (including reasonable attorneys' fees and costs) in whole or in part, without the prior written consent of IMAC. Copies of this document, in whole or in part and made for any use, shall include the name of each user and not each subsequent user.
A	04-07	Issued for Permitting			DATE: 3-14-07	APPROVED: DOW		
					CHECKED: PN			
					DATE: 4-9-07			



Idaho-Maryland Mine Project
Grass Valley, California

Prepared by
HGA
Architecture | Engineering | Planning

BUILDING 8
FUEL OIL STORAGE

PLATE:
N12H